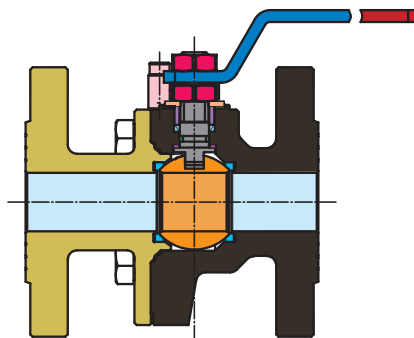


CAST TOPAZ















VALVOLE INDUSTRIALI
INDUSTRIAL VALVE



GUARDA IL VIDEO / WATCH THE VIDEO



SPECIFICA MATERIALI MATERIAL SPECIFICATION

PARTICOLARI COMPONENTS	ACCIAIO INOX AISI 316 STAINLESS STEEL AISI 316	ACCIAIO CARBONICO CARBON STEEL
 CORPO BODY	AISI 316 D 1.4401	A 105
 SFERA BALL	AISI 316 D 1.4408	AISI 304 D 1.4308
 PERNO STEM	AISI 316 D 1.4401	AISI 304 D 1.4301
 O-RING O-RING	FKM	FKM
 PREMIGUARNIZIONE PACKING WASHER	AISI 304 D 1.4301	AISI 304 D 1.4301
 RONDELLE ELASTICHE SPRING WASHERS	AISI 301 D 1.4310	50 CRV4
 FERMO OPERATION STOP	AISI 301 D 1.4310	Carbon Steel 8.8
 DADO LOCKING NUT	AISI 304 D 1.4301	A 105
 LEVA LEVER HANDLE	AISI 304 D 1.4301	A 105
 DADO DEL PERNO STEM RETAINING-NUT	AISI 304 D 1.4301	A 105
 TENUTA PERNO STEM PACKING	PTFE	PTFE
 ANELLO ANTIFRIZIONE THRUST WASHER	PTFE	PTFE
 SEDI LATERALI BALL SEATS	PTFE	PTFE
 FLANGIA CORPO BODY FLANGE	AISI 316 D 1.4401	LF2

PRESSIONE DI ESERCIZIO

PN16/40 da DN15 a DN80.
PN16 nelle misure DN65 e DN100
(PN40 a richiesta).

LIMITI DI TEMPERATURA

Da -20° C a +180° C (versioni AISI 316, AISI 304 con PTFE).
Da -10° C a +180° C (versione A105 e PTFE).

ESECUZIONI SPECIALI

Guarnizioni speciali:

- PTFE + FIBRA DI VETRO:
da -20° C a +195° C (versione INOX).
- PTFE + CARBOGRAFITE: fino a 210° C.
- PTFE + anima metallica.
- PEEK per alte temperature: fino a 250° C.
- Guarnizione integrale in PTFE.

Prolunga del perno (50mm e 100mm).
Versione sgrassata.
Riduttore manuale.
Dispositivo antistatico su richieste per DN15 e DN20.
Esecuzione ATEX su richiesta.
Disponibile in AISI 316L.

PRESSURE LIMITS

PN16/40 from DN15 to DN80.
PN16 for sizes DN65 and DN100 (
PN40 on request)

TEMPERATURE LIMITS

From -20° C to +180° C (AISI 316, AISI 304 with PTFE seats).
From -10° C to +180° C (A105 with PTFE seats).

SPECIAL EXECUTIONS

Special gaskets:

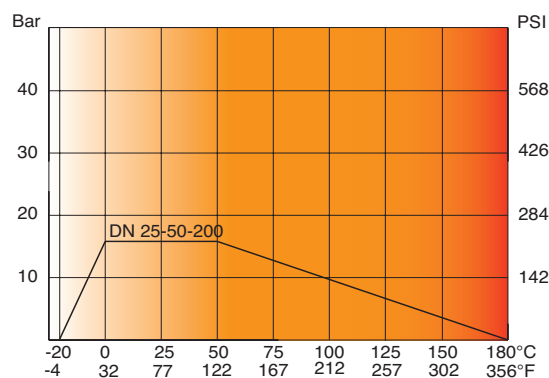
- PTFE + GLASS-FIBER:
from -20° C to +195° C (stainless steel versions).
- PTFE + CARBO-GRAPHITE: to 210° C.
- PTFE + metallic core.
- PEEK for high temperature: up to 250° C.
- Cavity filler in PTFE.

Stem extensions (50mm and 100mm).
Degreased version. Manual gear-box.
Stem with antistatic device on request for DN15 and DN20.
ATEX execution on request.
Available in AISI 316L.

SISTEMA DI BLOCCAGGIO LEVA (SENZA LUCCHETTO): A0885 | LEVER LOCKING SYSTEM (WITHOUT PADLOCK): A0885

Diagramma pressione/temperatura (prova eseguita con acqua)

Pressure/temperature diagram
(tested with water)



Coppia di sblocco in Nm | Breaking Torque in Nm

DN size	15	20	25	32	40	50	65	80	100	125	150	200
0	4	7	10	16	25	35	55	75	150	240	310	600
16	4,8	8,5	11,3	19	28	39	59	84,5	168	300	400	800
PN - bar												
	Nm											

I valori in Nm variano a seconda dell'applicazione e dei materiali delle guarnizioni. Considerare sempre un adeguato coefficiente di sicurezza.

Values in Nm change depending on the application and material of the seats. Always consider a suitable safety factor.

CAST TOPAZ

VALVOLE INDUSTRIALI
INDUSTRIAL VALVE

A1006F TOPAZ

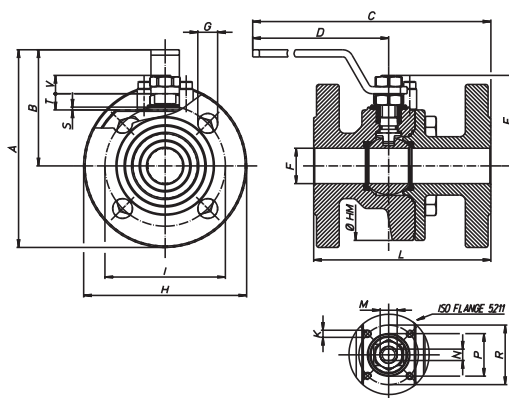
ATEX CE Ex II 2 GD X *

*Su richiesta/Available on request

UNI EN 1092-1
AISI 316
DIN F4 fino DN100
DIN F5 fino DN125



FIRE SAFE



CODICE CODE	MISURA SIZE	PN Bar	EXECUTION	A	B	C	D	E	F	G	H	I	K	L	M	N	P	R	S	T	V	N° holes	ISO flange	KV
A1006F06	DN 25	16/40	F-ND	136	82	254	180	62,5	25	M16	108	79,4	M5	127	M12	8	30	42	2	11,5	11,5	4	F04	130
A1006F08	DN 40	16/40	F-ND	171,5	108	337	230	87,5	40	M16	127	98,4	M6	165	M16	10	35	50	2,5	14,5	15,5	4	F05	170
A1006F09	DN 50	16/40	F-ND	190	115	345	230	94,5	49,5	M16	150	120,7	M6	178	M16	10	35	50	2,5	14,5	15,5	4	F05	280
A1006F10	DN 65	16	F-ND	228	139	438	320	122,5	65	M16	178	139,7	M8	190	M22	14	55	70	3	18,7	23,8	4/8	F07	510
A1006F11	DN 80	16/40	F-ND	245	150	448	320	132,5	78	M16	190,5	152,4	M8	203	M22	14	55	70	3	18,7	23,8	8	F07	770
A1006F12	DN 100	16	F-ND	273	163	523	370	148,5	96	M16	220	190,5	M10	229	M27	16		102		1,5	26	8	F10	1200
A1006F13	DN 125	16	F-ND	289	181	532	370	166,5	118		254	216	M10	254	M27	16	70	102	3	22	26	8	F10	
A1006F14	DN 150	16	F-ND	389	249	815	584	200	144		280	241,3	M10	394	M42	26		125		4	31,5	8	F10	

Valvola a sfera modello wafer. **JADE** da barra fino DN32 - **CAST JADE** da fusione da DN40.
Wafer ball valve. **JADE** from bar till DN32 - **CAST JADE** from DN40.

A1005F TOPAZ

ATEX CE Ex II 2 GD X *

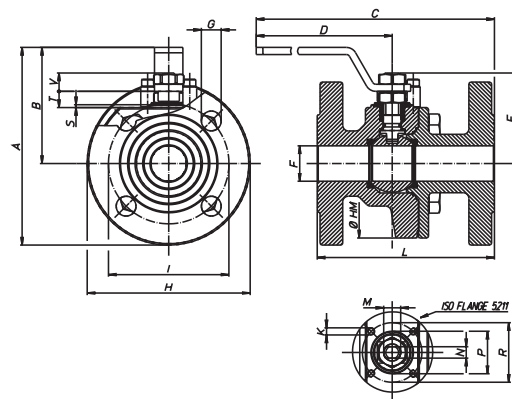
*Su richiesta/Available on request

ANSI 150
AISI 316
DIN F4 fino DN100
DIN F5 fino DN125



FIRE SAFE

AISI 316





CODICE CODE	MISURA SIZE	ANSI	EXECUTION	A	B	C	D	E	F	G	H	I	K	L	M	N	P	R	S	T	V	N° holes	ISO flange	KV
A1006F06	DN 25	150	F-ND	136	82	254	180	62,5	25	M16	108	79,4	M5	127	M12	8	30	42	2	11,5	11,5	4	F04	130
A1006F08	DN 40	150	F-ND	171,5	108	337	230	87,5	40	M16	127	98,4	M6	165	M16	10	35	50	2,5	14,5	15,5	4	F05	170
A1006F09	DN 50	150	F-ND	190	115	345	230	94,5	49,5	M16	150	120,7	M6	178	M16	10	35	50	2,5	14,5	15,5	4	F05	280
A1006F10	DN 65	150	F-ND	228	139	438	320	122,5	65	M16	178	139,7	M8	190	M22	14	55	70	3	18,7	23,8	4/8	F07	510
A1006F11	DN 80	150	F-ND	245	150	448	320	132,5	78	M16	190,5	152,4	M8	203	M22	14	55	70	3	18,7	23,8	8	F07	770
A1006F12	DN 100	150	F-ND	273	163	523	370	148,5	96	M16	220	190,5	M10	229	M27	16		102		1,5	26	8	F10	1200
A1006F13	DN 125	150	F-ND	289	181	532	370	166,5	118		254	216	M10	254	M27	16	70	102	3	22	26	8	F10	
A1006F14	DN 150	150	F-ND	389	249	815	584	200	144		280	241,3	M10	394	M42	26		125		4	31,5	8	F10	

Valvola a sfera doppia flangia AISI 316 ANSI 150 da fusione fori filettati metrici.
Split-body ball valve cast version AISI 316 ANSI 150 metrical drill holes.

B: DA BARRA / FROM BAR - F: DA FUSIONE / CAST VERSION - ND: NON DEBORDATE / BALL CONTAINED

A1008F TOPAZ

ATEX   II 2 GD X *

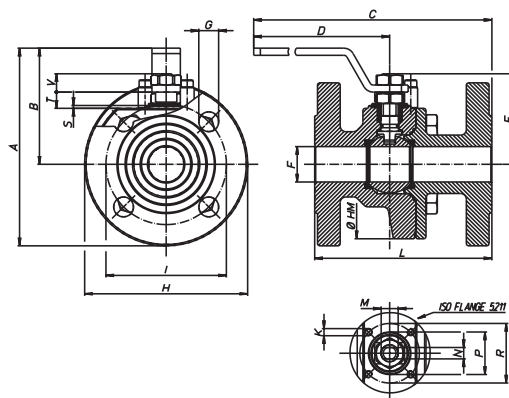
* Su richiesta/Available on request



PED 2014/68/EU

FIRE SAFE

LF2
UNI EN 1092-1
DIN F4 fino DN100
DIN F5 fino DN125



CODICE CODE	MISURA SIZE	PN Bar	EXECUTION	A	B	C	D	E	F	G	H	I	K	L	M	N	P	R	S	T	V	N° holes	ISO flange	KV
A1008F09	DN 50	16/40	F-ND	190	115	345	230	94,5	49,5	M16	150	120,7	M6	178	M16	10	35	50	2,5	14,5	15,5	4	F05	280
A1008F11	DN 65	16/40	F-ND	228	139	438	320	122,5	65	M16	178	139,7	M8	190	M22	14	55	70	3	18,7	23,8	4/8	F07	510
A1008F12	DN 80	16	F-ND	245	150	448	320	132,5	78	M16	190,5	152,4	M8	203	M22	14	55	70	3	18,7	23,8	8	F07	770
A1008F13	DN 100	16	F-ND	273	163	523	370	148,5	96	M16	220	190,5	M10	229	M27	16	102	1,5	26	8	F10	1200		
A1008F14	DN 125	16	F-ND	289	181	532	370	166,5	118		254	216	M10	254	M27	16	70	102	3	22	26	8	F10	

Valvola a sfera doppia flangia in acciaio al carbonio A105 da fusione fori filettati metrici.
Split-body ball valve cast version in carbon A105 steel metrical drill holes.

A1007F TOPAZ

ATEX   II 2 GD X *

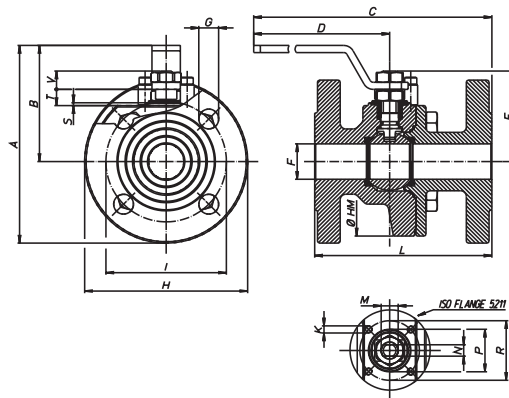
* Su richiesta/Available on request



PED 2014/68/EU

FIRE SAFE

ANSI 150
LF2



CODICE CODE	MISURA SIZE	ANSI	EXECUTION	A	B	C	D	E	F	G	H	I	K	L	M	N	P	R	S	T	V	N° holes	ISO flange	KV
A1007F09	DN 50	150	F-ND	190	115	345	230	94,5	49,5	M16	150	120,7	M6	178	M16	10	35	50	2,5	14,5	15,5	4	F05	280
A1007F11	DN 65	150	F-ND	228	139	438	320	122,5	65	M16	178	139,7	M8	190	M22	14	55	70	3	18,7	23,8	4/8	F07	510
A1007F13	DN 80	150	F-ND	245	150	448	320	132,5	78	M16	190,5	152,4	M8	203	M22	14	55	70	3	18,7	23,8	8	F07	770
A1007F14	DN 100	150	F-ND	273	163	523	370	148,5	96	M16	220	190,5	M10	229	M27	16	102	1,5	26	8	F10	1200		

Valvola a sfera doppia flangia in acciaio al carbonio A105 ANSI 150 da fusione fori filettati metrici.
Split-body ball valve cast version in carbon steel A105 ANSI 150 metrical drill holes.

B: DA BARRA / FROM BAR - F: DA FUSIONE / CAST VERSION - ND: NON DEBORDATE / BALL CONTAINED

