

# MINI BON

MINI VALVOLA A SFERA  
MINI BALL VALVE

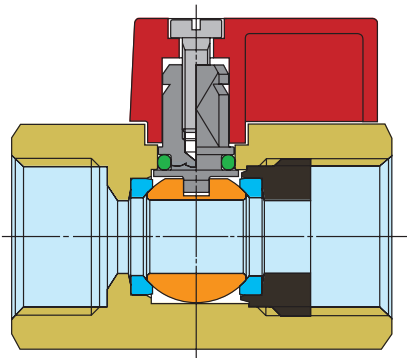


## SPECIFICA MATERIALI MATERIAL SPECIFICATION

## PARTICOLARI COMPONENT

## MATERIALI MATERIAL

## DESCRIZIONE DESCRIPTION



<span style="color: yellow;">■</span> CORPO BODY	CW 617 N UNI EN 12165	STAMPATO DA BARRA, NICHELATO Forged, Nickel-Plated
<span style="color: black;">■</span> MANICOTTO END ADAPTER	CW 614 N UNI EN 12164	STAMPATO DA BARRA, NICHELATO Forged, Nickel-Plated
<span style="color: orange;">■</span> SFERA BALL	CW 614 N UNI EN 12164	DA BARRA, NICHEL-CROMATA Machined, Chrome-Plated
<span style="color: cyan;">■</span> SEDI LATERALI BALL GASKETS	PTFE	VERGINE Virgin
<span style="color: grey;">■</span> PERNO STEM	CW 614 N UNI EN 12164	DA BARRA Machined
<span style="color: green;">■</span> O-RINGS	ELASTOMERO Elastomer	ADATTO ALL'USO PER ACQUA Suitable For Use With Water
<span style="color: purple;">■</span> LEVETTA LEVER HANDLE	NYLON RINFORZATO VETRO Glass-Filled Nylon	-
<span style="color: grey;">■</span> VITE SCREW	ACCIAIO Steel	ZINCATA Zinc-Plated

**FILETTATURE** Estremità filettate UNI ISO 228/1.

**END CONNECTIONS** Threaded ends UNI ISO 228/1.

**IMPIEGHI** Le valvole a sfera **MINI BON** sono adatte per l'uso con acqua calda e fredda, aria compressa, oli e idrocarburi in generale.

**APPLICATIONS** **MINI BON** ball valves are suitable for applications with hot or cold water, compressed air, oils and hydrocarbons in general.

**PRESSIONE DI ESERCIZIO** PN 10.  
Vedere diagramma pressione/temperatura

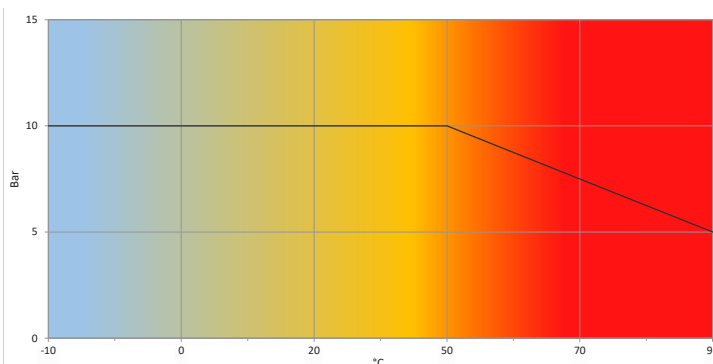
**PRESSURE LIMITS** PN 10.  
See pressure/temperature diagram

**LIMITI DI TEMPERATURA** -10°C +90°C.  
Vedere diagramma pressione/temperatura.

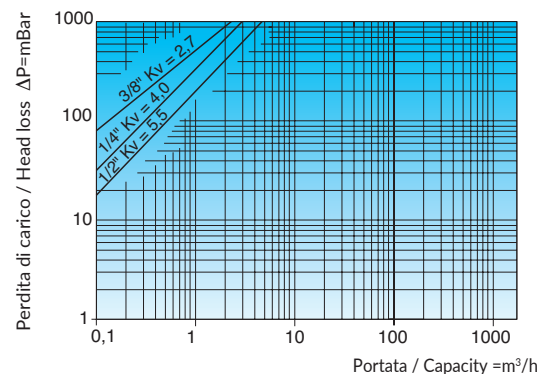
**TEMPERATURE LIMITS** From -10°C to + 90°C.  
See pressure/temperature diagram.

IL NUMERO VICINO ALLA MISURA INDICA IL Ø DEL TUBO PER IL MONTAGGIO DEL DADO E OGIVA - MISURA X Ø TUBO  
THE NUMBER NEAR TO THE SIZE INDICATES THE Ø OF THE TUBE FOR MOUNTING THE NUT AND OGIVE - SIZE X Ø TUBE

**Diagramma pressione/temperatura** (prova eseguita con acqua)  
Pressure/temperature diagram (tested with water)



**Diagramma perdite di carico** (prova eseguita con acqua)  
Loss of head diagram (tested with water)



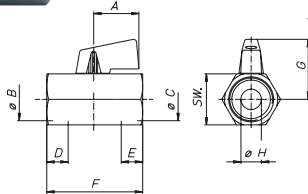
# MINI BON

## MINI VALVOLA A SFERA MINI BALL VALVE

### S0330 MINI BON



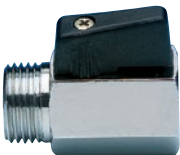
ERAC



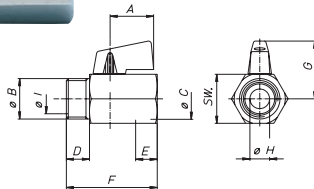
CODICE CODE	MISURA SIZE	PN Bar	A	øB	øC	D	E	F	G	øH	SW	Box Crt
S0330C01	1/8"	10	22	1/8"	1/8"	9	10	39	27	8	20	30/240
S0330C02	1/4"	10	22	1/4"	1/4"	8,7	10	39	27	8	20	20/160
S0330C03	3/8"	10	22	3/8"	3/8"	12	10	42	27	8	20	20/160
S0330C04	1/2"	10	22	1/2"	1/2"	12	11,5	47	29	10	24	25/175
S0330C05	3/4"	10	22	3/4"	3/4"	14,5	14,5	54	32	13,5	30	15/90

Valvole a sfera con levetta, femmina/femmina, cromata.  
Ball valve with lever, female/female, chrome-plated.

### S0331 MINI BON



ERAC



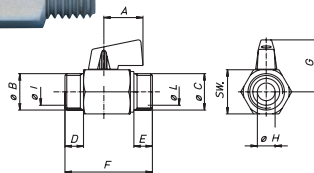
CODICE CODE	MISURA SIZE	PN Bar	A	øB	øC	D	E	F	G	øH	øL	SW	Box Crt
S0331C01	1/8"x6	10	22	1/8"	1/8"	9	10	39	27	5	6	20	30/240
S0331C02	1/4"x8	10	22	1/4"	1/4"	9	9	39	27	8	8	20	20/160
S0331C03	3/8"x12	10	22	3/8"	3/8"	10	10	42	27	8	12	20	20/160
S0331C04	1/2"x15	10	22	1/2"	1/2"	12,2	11,5	47	29	10	15	24	25/175
S0331C05	3/4"x18	10	22	3/4"	3/4"	14	12	54	32	13,5	18	30	15/105

Valvole a sfera con levetta, maschio/femmina, cromata.  
Ball valve with lever, male/female, chrome-plated.

### S0332 MINI BON



ERAC



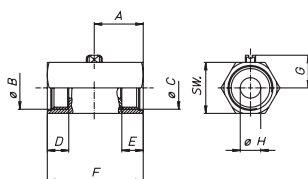
CODICE CODE	MISURA SIZE	PN Bar	A	øB	øC	D	E	F	G	øH	øL	øL	SW	Box Crt
S0332C02	1/4"x8	10	22	1/4"	1/4"	9	9	40,4	27	8	8	8	20	30/240
S0332C03	3/8"x12	10	22	3/8"	3/8"	10	10	42,4	27	8	12	12	20	30/240
S0332C04	1/2"x15	10	22	1/2"	1/2"	10,5	10,5	50	29	10	15	15	20	25/175

Valvole a sfera con levetta, maschio/maschio, cromata.  
Ball valve with lever, male/male, chrome-plated.

### S0333 MINI BON



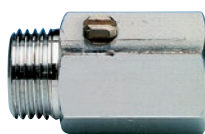
ERAC



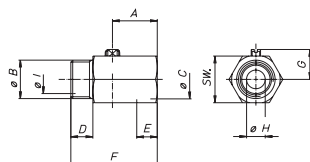
CODICE CODE	MISURA SIZE	PN Bar	A	øB	øC	D	E	F	G	øH	SW	Box Crt
S0333C01	1/8"	10	21	1/8"	1/8"	9	10	39	12,9	8	20	30/240
S0333C02	1/4"	10	18	1/4"	1/4"	9	9	39	12,5	8	21	30/210
S0333C03	3/8"	10	21	3/8"	3/8"	10	9	42	12,5	8	21	30/240
S0333C04	1/2"	10	24	1/2"	1/2"	10,5	10,5	47	14,5	10	25	25/150
S0333C05	3/4"	10	27	3/4"	3/4"	14,5	12	54	17,5	13,5	30	15/105

Valvola a sfera, manovra con cacciavite, femmina/femmina, cromata.  
Ball valve, to be operated by a screwdriver, female/female, chrome-plated.

### S0334 MINI BON



ERL



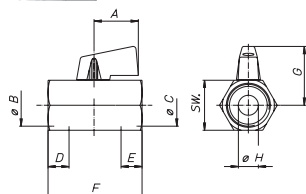
CODICE CODE	MISURA SIZE	PN Bar	A	øB	øC	D	E	F	G	øH	øI	SW	Box Crt
S0334C01	1/8"X6	10	18	1/8"	1/8"	9	10	39	12,5	6	6	21	30/240
S0334C02	1/4"X8	10	18	1/4"	1/4"	9	9	39	12,5	8	8	21	30/240
S0334C03	3/8"X12	10	21	3/8"	3/8"	9	10	40	12,5	8	12	21	30/240
S0334C04	1/2"X15	10	24	1/2"	1/2"	10,5	11,5	45	14,5	10	15	25	25/200
S0334C05	3/4"X18	10	27	3/4"	3/4"	13,5	12	51	17	12	18	30	15/105

Valvola a sfera, manovra con cacciavite, maschio/femmina, cromata.  
Ball valve, to be operated by a screwdriver, male/female, chrome-plated.

### S1317 MINI BOX LUX



ERL



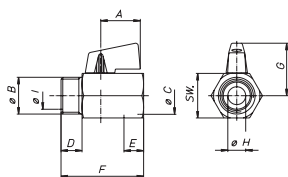
CODICE CODE	MISURA SIZE	PN Bar	A	øB	øC	D	E	F	G	øH	SW	Box Crt
S1317C03	3/8"	10	22	3/8"	3/8"	10	9	42	27	8	21	30/210
S1317C04	1/2"	10	22	1/2"	1/2"	10,5	10,5	47	29	10	25	50/150

Valvole a sfera, femmina/femmina, con levetta alluminio.  
Ball valve, female/female, with aluminium-plated lever.

### S1318 MINI BOX LUX



ERL



CODICE CODE	MISURA SIZE	PN Bar	A	øB	øC	D	E	F	G	øH	øI	SW	Box Crt
S1318C03	3/8"X12	10	21	3/8"	3/8"	9	9	40	27	8	12	21	30/240
S1318C04	1/2"X15	10	24	1/2"	1/2"	10,5	10,5	45	29	10	15	25	25/125

Valvole a sfera, maschio/femmina, con levetta alluminio.  
Ball valve, male/female, with aluminium-plated lever.

