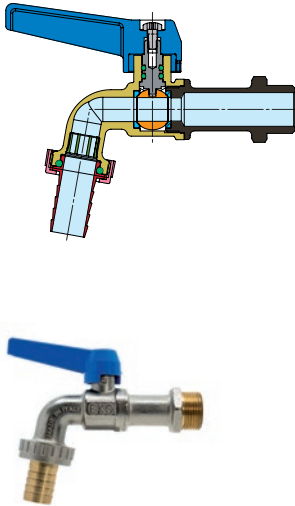


### EKO

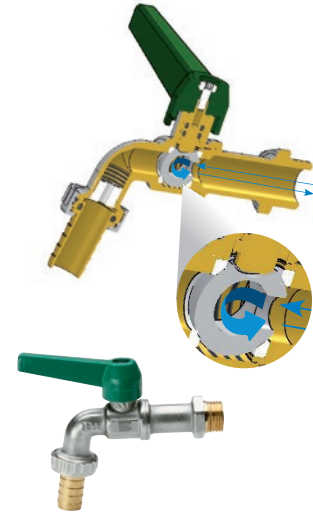


### EKO MATIC



VERSIONE AD ATTACCO RAPIDO  
QUICK CONNECTION VERSION

### EKO ARTIC



GUARDA IL VIDEO / WATCH THE VIDEO



SPECIFICA MATERIALI  
MATERIAL SPECIFICATION



PARTICOLARI COMPONENT	MATERIALI MATERIAL	DESCRIZIONE DESCRIPTION
<span style="color: #808000;">■</span> CORPO BODY	CW 617 N UNI EN 12165	STAMPATO DA BARRA, NICHELATO Forged, Nickel-Plated
<span style="color: #000000;">■</span> MANICOTTO END ADAPTER	CW 617 N UNI EN 12165	STAMPATO DA BARRA, NICHELATO Forged, Nickel-Plated
<span style="color: #FF8C00;">■</span> SFERA BALL	CW 614 N UNI EN 12164	DA BARRA, NICHEL-CROMATA Machined, Chrome-Plated
<span style="color: #00B0F0;">■</span> SEDI LATERALI BALL GASKETS	PTFE	VERGINE Virgin
<span style="color: #808080;">■</span> PERNO STEM	CW 614 N UNI EN 12164	DA BARRA Machined
<span style="color: #008000;">■</span> O-RINGS	ELASTOMERO Elastomer	ADATTO ALL'USO PER ACQUA Suitable For Use With Water
<span style="color: #000080;">■</span> LEVA HANDLE	AL UNI 5076	VERNICIATA Painted
<span style="color: #808080;">■</span> VITE SCREW	ACCIAIO Steel	ZINCATA Zinc-Plated
<span style="color: #008000;">■</span> ROMPIGETTO FLOW STRAINER	PLASTICA Plastic	STAMPATO Forged
<span style="color: #800000;">■</span> PORTAGOMMA HOSE CONNECTOR	CW 617 N UNI EN 12165	DA BARRA Machined
<span style="color: #FF0000;">■</span> GIRELLO NUT	CW 617 N UNI EN 12165	STAMPATO DA BARRA, NICHELATO Forged, Nickel-Plated
<span style="color: #000000;">■</span> O-RING O-RINGS	EPDM	ADATTO ALL'USO PER ACQUA Suitable For Use With Water
<span style="color: #800000;">■</span> INNESTO PLUG	CW 614 N UNI EN 12164	DA BARRA Machined

Diagramma pressione temperatura  
(prova eseguita con acqua)

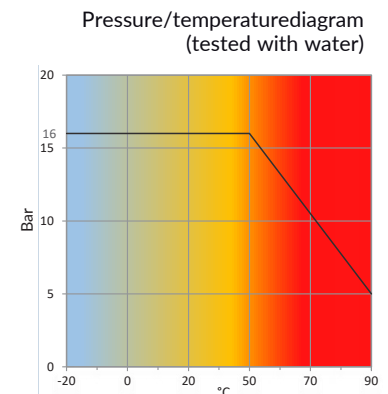
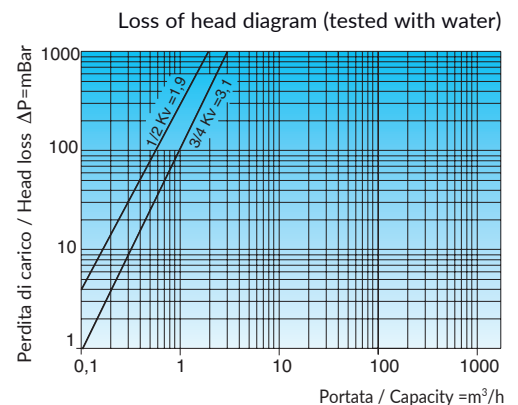


Diagramma perdite di carico  
(prova eseguita con acqua)

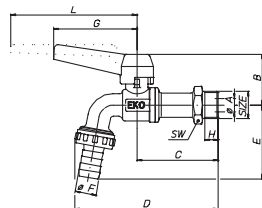


<b>FILETTATURE</b>	Estremità filettate UNI ISO 228.	<b>END CONNECTIONS</b>	Threaded ends UNI ISO 228.
<b>IMPIEGHI</b>	Acqua fredda e calda, aria compressa, oli, fluidi non corrosivi, benzine. Per impieghi particolari vedere la tabella delle resistenze chimiche.	<b>APPLICATIONS</b>	Hot and cold water, compressed air, oils, non corrosive fluids, fuels. For any special uses see the table of chemical resistance.
<b>PRESSIONE DI ESERCIZIO</b>	Max pressione 16. Vedere diagramma pressione/temperatura.	<b>PRESSURE LIMITS</b>	Max pressure 16. See pressure/temperature diagram.
<b>LIMITI DI TEMPERATURA</b>	Da -20°C a +90°C. Vedere diagramma pressione/temperatura.	<b>TEMPERATURE LIMITS</b>	From -20°C to + 90°C. See pressure/temperature diagram.

### S0069 EKO ARTIC

ANTIGELO / ANTIFREEZE

EKO

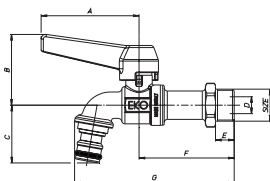


CODICE CODE	MISURA SIZE	PN Bar	øA	B	C	D	E	øF	G	H	L	SW	Box Crt
S0069N04	1/2" (DN10)	16	10	45,5	61,5	108	57	16	63	12	-	20	12/48
S0069N05	3/4" (DN12,5)	16	12,5	47,5	65,6	122	65	19,5	63	12	-	30	6/30

Rubinetto a sfera curvo, fil. maschio con leva, nichelato, resistente alle basse temperature (-20°C).  
Angle ball bib cock, male with lever, nickel-plated, resistant to low temperature (-20°).

### S0071 EKO MATIC

EKO



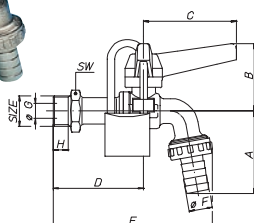
CODICE CODE	MISURA SIZE	PN Bar	øA	B	C	øD	E	F	G	SW	Box Crt
S0071N04	1/2" (DN10)	16	63	45,5	37,5	10	12	61,2	103	25	12/48

Rubinetto a sfera curvo, fil. maschio con leva, con attacco rapido, nichelato.  
Angle ball bib cock, male threaded with lever, with quick fit, nickel-plated.

### S0074 EKO

Articolo comprensivo di lucchetto non montato.  
Article including a padlock is supplied not assembled

EKO

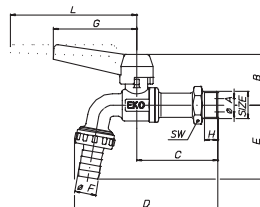
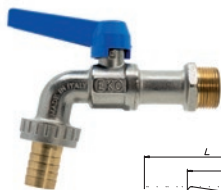


CODICE CODE	MISURA SIZE	PN Bar	A	B	C	D	E	øF	øG	SW	Box Crt
S0074N04	1/2" (DN10)	16	57	47,5	63	61,2	108	16	10	25	10/20
S0074N05	3/4" (DN12,5)	16	65	47,5	63	65,65	122	19,5	12,5	30	6/24

Rubinetto a sfera curvo con fil. maschio portagomma, con leva, con lucchetto, nichelato.  
Angle ball bib cock with male thread and hose connector, with lever, with padlock, nickel-plated.

### S0082 EKO

ERC

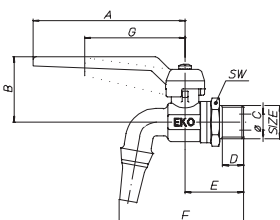


CODICE CODE	MISURA SIZE	PN Bar	øA	B	C	øD	E	F	øG	H	L	SW	Box Crt
S0082N03	3/8" (DN10)	16	10	44,5	53	95	50	14,5	63	10	-	25	12/60
S0082N04	1/2" (DN10)	16	10	45,5	61,2	108	57	16	63	12	-	25	12/48
S0082N05	3/4" (DN12,5)	16	12,5	47,5	65,65	122	65	19,5	63	14	-	30	6/30
S0082N06	1" (DN17,5)	16	17,5	46,5	83,5	152	152	27	-	15,5	95	37	4/16

Rubinetto a sfera curvo, fil. maschio con leva, nichelato.  
Angle ball bib cock, male threaded with lever, nickel-plated.

### S0096 EKO

ERC

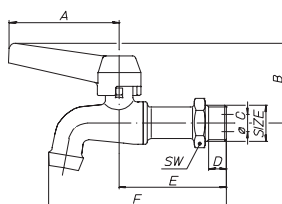


CODICE CODE	MISURA SIZE	PN Bar	A	øB	øC	D	E	F	G	SW	Box Crt
S0096N03	3/8" (DN10)	16	-	44,5	10	10	29,25	64	63	22	25/100
S0096N04	1/2" (DN10)	16	95	41	10	15	36,7	77,5	-	27	12/48
S0096N05	3/4" (DN12,5)	16	95	43	12,5	21	44,15	92,5	-	33	8/32
S0096N06	1" (DN17,5)	16	95	46,5	17,5	17	44	10,5	-	40	6/24

Rubinetto a sfera curvo fil. maschio con bocchello, con leva lunga azzurra, nichelato.  
Angle ball bib cock, male threaded with nozzle, with a long blue lever, nickel-plated.

### S0100 EKO LUX

ERC

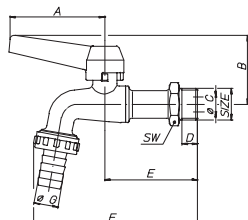


CODICE CODE	MISURA SIZE	PN Bar	A	B	øC	D	E	F	SW	Box Crt
S0100C04	1/2" (DN10)	16	63	45,5	10	12	61,2	101,5	25	12/48

Rubinetto a sfera curvo fil. maschio con leva, cromato lucido.  
Angle ball bib cock, male threaded with lever, polished chrome-plated.

### S0101 EKO•LUX

ERC



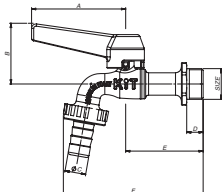
CODICE CODE	MISURA SIZE	PN Bar	A	B	øC	D	E	F	SW	Box Crt
S0101C04	1/2" (DN10)	16	63	45,5	10	12	61,2	108	25	12/48

Rubinetto a sfera curvo fil. maschio con portagomma, con leva, cromato lucido.  
Angle ball bib cock, male threaded with hose connector, with lever, polished chrome-plated.

### S0059 KIT



ERAC



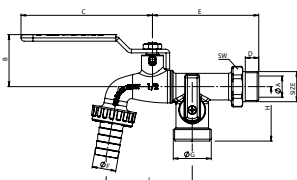
CODICE CODE	MISURA SIZE	PN Bar	A	B	øC	D	E	F	SW	Box Crt
S0059K04	½" (DN10)	16	63	41	14,5	11	51	93	25	12/48
S0059K05	¾" (DN12,5)	16	63	46	19	14	61,2	109	30	12/48

Rubinetto a sfera curvo fil. maschio con portagomma, con leva in alluminio nera, nichelato.  
Angle ball bib cock with male thread and hose connector, with black lever in aluminium, nickel-plated.

### S0060 KIT



ERAC



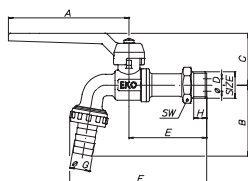
CODICE CODE	MISURA SIZE	PN Bar	øA	B	C	D	E	øF	øG	H	I	SW	Box Crt
S0060K04	½" (DN10)	16	10	35	90	9,2	73	16	¾"	37	59	25	10/40

Rubinetto doppio a sfera fil. maschio con portagomma, leva acciaio, nichelato.  
Angle ball bib cock with hose connector and second outlet, steel lever, nickel-plated.

### S0061 EKO



ERAC



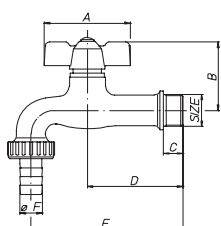
CODICE CODE	MISURA SIZE	PN Bar	A	B	C	øD	E	øF	G	H	SW	Box Crt
S0061N03	¾" (DN10)	16	95	50	40,5	8	53	95	14,5	10	20	12/48
S0061N04	½" (DN10)	16	95	57	41	10	61,2	108	16	12	25	12/48
S0061N05	¾" (DN12,5)	16	95	65	43	12,5	65,65	122	19,5	14	30	6/30
S0061N06	1" (DN17,5)	16	95	79	46,5	17,5	83,5	152	27	15,5		4/16H

Rubinetto a sfera curvo G3/4" maschio con portagomma, con leva lunga rossa, nichelato.  
Angle G3/4" ball bib cock with male thread and hose connector, with a long red lever, nickel-plated.

### H0004

RUBINETTO ANTIGELO  
ANTIFREEZE BIB COCK

ERAC



CODICE CODE	MISURA SIZE	PN Bar	A	B	C	D	E	øF	SW	Box Crt
H0004N04	½" (DN10)	10	55	44	12,7	61	97	14,5	25	10/50

Rubinetto erogatore curvo con portagomma, con passo rapido, antigelo, nichelato.  
Angle supply bib cock with hose connector, with rapid pitch, anti-freeze, nickel-plated.

Temperatura: -20°C / + 130°C  
Temperature: -20°C / + 130°C

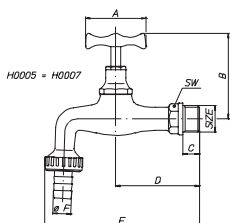
### H0005

RUBINETTO EROGATORE  
SUPPLY BIB COCK

ERAC



Temperatura: Max 90°C  
Temperature: Max 90°C



CODICE CODE	MISURA SIZE	PN Bar	A	B	C	D	E	øF	SW	Box Crt
H0005C04	1/2" (DN10)	10	48	68	12,5	68	123	14,5	21	12/48
H0005C05	3/4" (DN10)	10	57	80	13,5	75	137	20	25	6/24

Rubinetto erogatore curvo con portagomma, sabbiato-cromato.  
Angle supply bib cock with hose connector, sandblasted-chrome-plated.

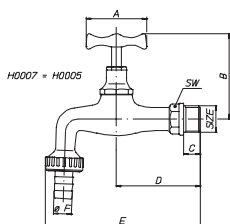
### H0007

RUBINETTO EROGATORE  
SUPPLY BIB COCK

ERAC



Temperatura: Max 90°C  
Temperature: Max 90°C



CODICE CODE	MISURA SIZE	PN Bar	A	B	C	D	E	øF	SW	Box Crt
H0007L03	3/8" (DN10)	10	48	68	12	68	118	14,5	19	12/48
H0007L04	1/2" (DN10)	10	48	68	12,5	68	123	14,5	21	12/48
H0007L05	3/4" (DN10)	10	57	80	13,5	75	137	20	25	6/24
H0007L06	1" (DN10)	10	57	84	15,7	86	161	27	32	3/12

Rubinetto erogatore curvo con portagomma, lucido.  
Angle supply bib cock with hose connector, polished.

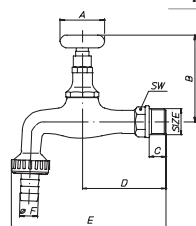
### H0008

RUBINETTO EROGATORE  
SUPPLY BIB COCK

ERAC



Temperatura: Max 90°C  
Temperature: Max 90°C



CODICE CODE	MISURA SIZE	PN Bar	A	B	C	D	E	øF	SW	Box Crt
H0008L04	1/2" (DN10)	10	48	68	12,5	68	123	14,5	21	12/48

Rubinetto erogatore curvo con portagomma, con chiavetta asportabile, lucido.  
Angle supply bib cock with hose connector, with removable key, polished.

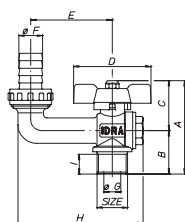
### S0130

IDRA  
IRRIGATION COCK

ERAC



Temperatura: Max 90°C  
Temperature: Max 90°C



CODICE CODE	MISURA SIZE	PN Bar	A	B	C	D	E	øF	øG	H	I	SW	Box Crt
S0130S04	1/2" (DN10)	16	62	29,5	32,75	52	55	16	10	84,5	13,2	16	12/60
S0130S05	3/4" (DN10)	16	67	31	36	52	60	19,5	12,5	92	13,2	16	6/30
S0130S06	1" (DN10)	16	83	43	40	52	69	28	17,5	108	21,7	16	4/20

Rubinetto a sfera idrante fil. maschio con portagomma, con farfalla rossa, sabbiato.  
Ball valve for hydrant with male thread and hose connector, with red T-handle, sandblasted.

